
NEWS RELEASE

For Immediate Release

Contact: Amy Whittaker
Title: Public Information Officer
Cell: (540) 589-3089
Awhittaker@roanokecountyva.gov

Roanoke County Breaks Ground on Plantation Road Project, Supports Key Economic Development Strategy

ROANOKE COUNTY, VA (March 8, 2017) – Leaders from Roanoke County were on hand Wednesday to break ground on the first phase of the Plantation Road Bicycle, Pedestrian and Streetscape Improvement project. The overall project encompasses the length of Plantation Road (Route 115) from Interstate 81 to Williamson Road (Route 11), a distance of about one mile. It's estimated that there are between 13,000 and 16,000 vehicle trips per day in this area. The corridor holds the largest concentration of employees within Roanoke County with more than 3,000 employees.

"This project represents a key economic development strategy for the Hollins area in support of some of the County's largest employers," said Board of Supervisors Chairman Joseph P. McNamara.

"Improvements to our commercial corridors create economic opportunities for new investment in Roanoke County."

The Plantation Road Project began in 2009 and since that time approximately \$4.2 million in federal, state and local funds have been allocated for the project. These funds are being used to design and construct Phase I on the west side of Plantation Road which includes: a 10-foot-wide shared-use path from Williamson Road to Lila Drive; a sidewalk from Lila Drive to Walrond Drive; street trees; curb and gutter and a "Welcome to Hollins" sign. The anticipated completion date is June 2018.

Future developments for the area will include a traffic signal with pedestrian crosswalks and signals at the Lila Drive intersection. Grant funding has also been requested for sidewalk between Walrond Drive and Gander Way, as well as for Williamson Road between Peters Creek and Plantation Roads.

For additional information about the project, visit www.RoanokeCountyVA.gov/Plantation.

###



Plantation Road Bicycle, Pedestrian and Streetscape Improvement Project Groundbreaking Ceremony March 8, 2017

Phase I – Starting Construction in March 2017

Phase I includes a shared use path along the west side of Plantation Road from Williamson Road to Walrond Drive with curb, gutter, and street trees. Extensive utility relocations are required and overhead relocations are underway. Construction will begin in the next few weeks and will last until the summer of 2018. This project is being administered by Roanoke County.

Estimated cost: \$4.2 million

Construction Manager: Steve Short, Whitman Requardt & Associates: cell (757) 567-1267, email sshort@wrallp.com

General Contractor: S.C. Rossi & Co, Inc.



Future Phases

Lila Drive Intersection

Lila Drive improvements include the installation of a four-leg traffic signal with pedestrian accommodations, realignment of entrances at BSC Ventures/Double Envelope on Plantation Road, Wells Fargo on Lila Drive and Harris on Lila Drive. Approximately 420 feet of Lila Drive will be reconstructed to accommodate the relocation of Harris' entrance. This project is administered by VDOT. Surveying is currently underway.

Estimated cost: \$1.3 million



Phase II

Phase II includes sidewalk, curb, gutter and street trees from Walrond Drive to Gander Way. Intersection improvements at Walrond Drive are included, as are two-leg pedestrian signals and crosswalks at the Gander/Friendship intersection. 90% plans are complete and right-of-way has been obtained. This project would be administered by Roanoke County.

Estimated cost: \$1.8 million

Funding requested in November 2016, awards will be announced in June 2017.

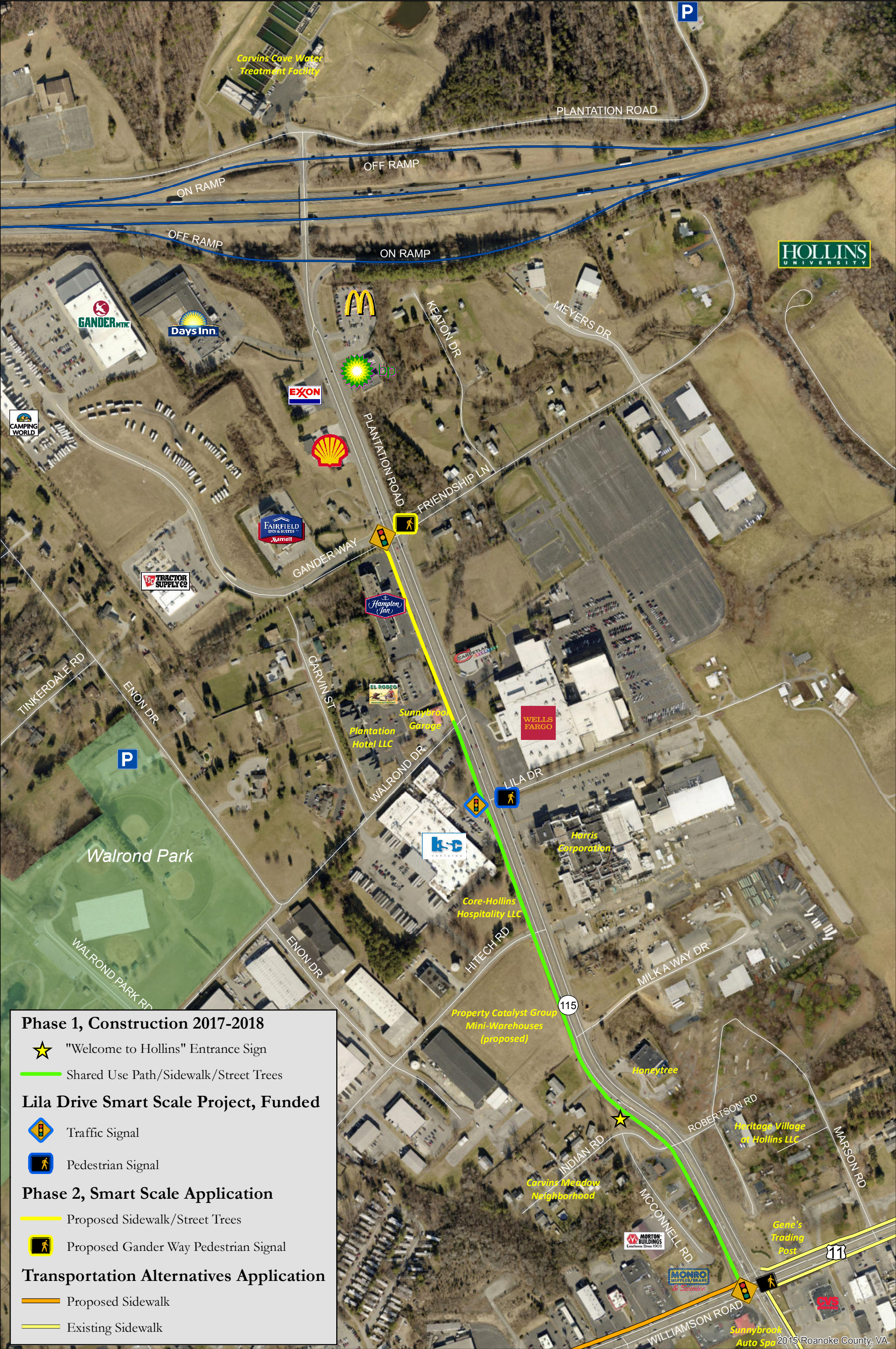
Project Webpage

www.roanokecountyva.gov/plantation

Questions

David Holladay, Planning Administrator, dholladay@roanokecountyva.gov, (540) 772-2094

Megan Cronise, Principal Planner, mcronise@roanokecountyva.gov, (540) 772-2106



Plantation Road Bicycle, Pedestrian and Streetscape Improvement Project Status March 8, 2017